

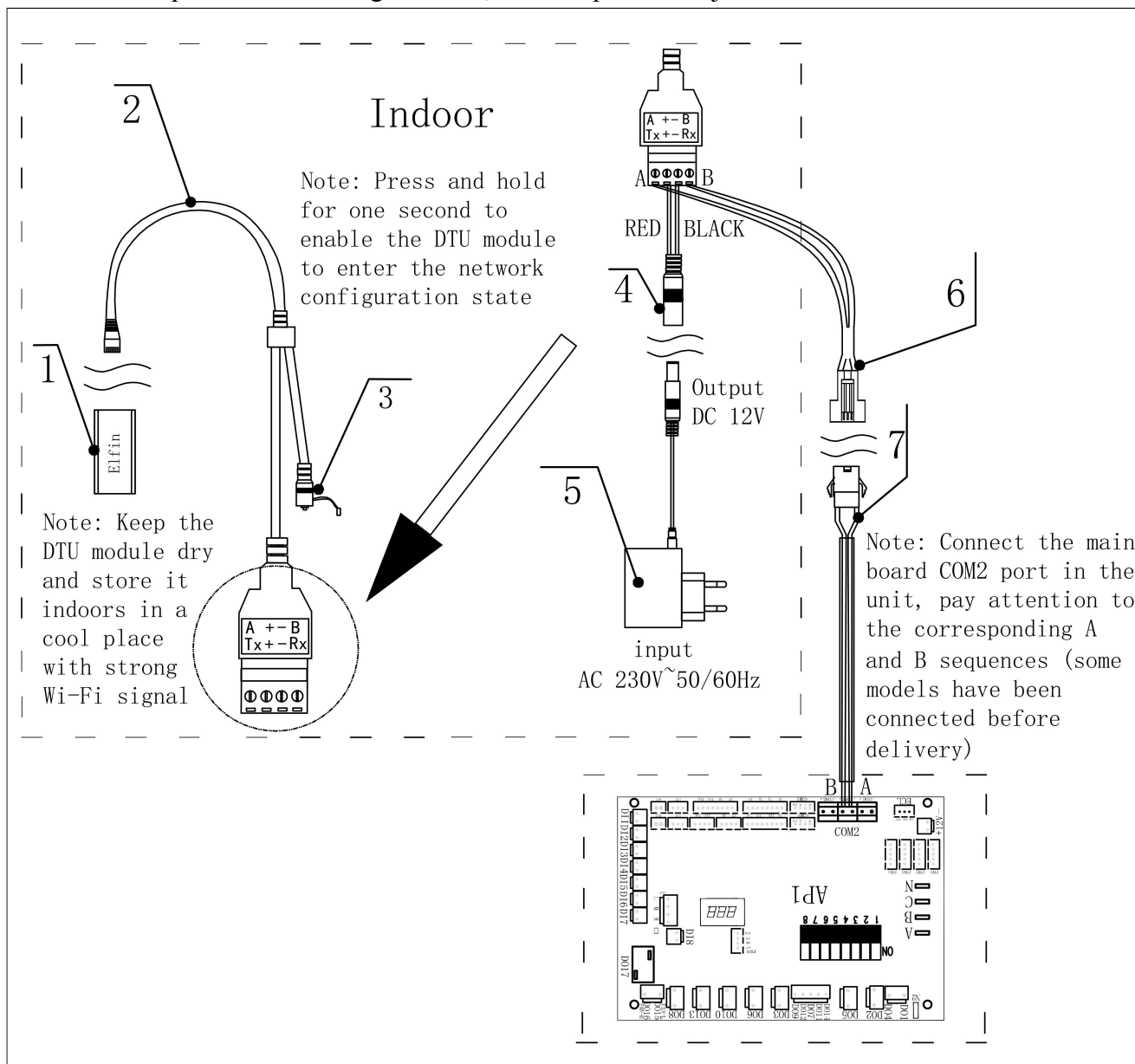
Smart Heat-Pump APP Instruction

Table of contents

1. Cable Connection Diagram of DTU Module	1
2. Product Introduction	3
2.1. Product Name	3
2.2. Product Description	3
2.3. Download APP	3
3. APP User Manual	4
3.1. Start Up	4
3.2. User Registration	5
3.3. Adding Device	6
3.3.1 LAN Adding Devices	7
3.3.2 Scan Code to Add Device	10
3.4. Equipment List	11
3.5. control page	13
3.6. parameter information	15
3.7. My Page	17

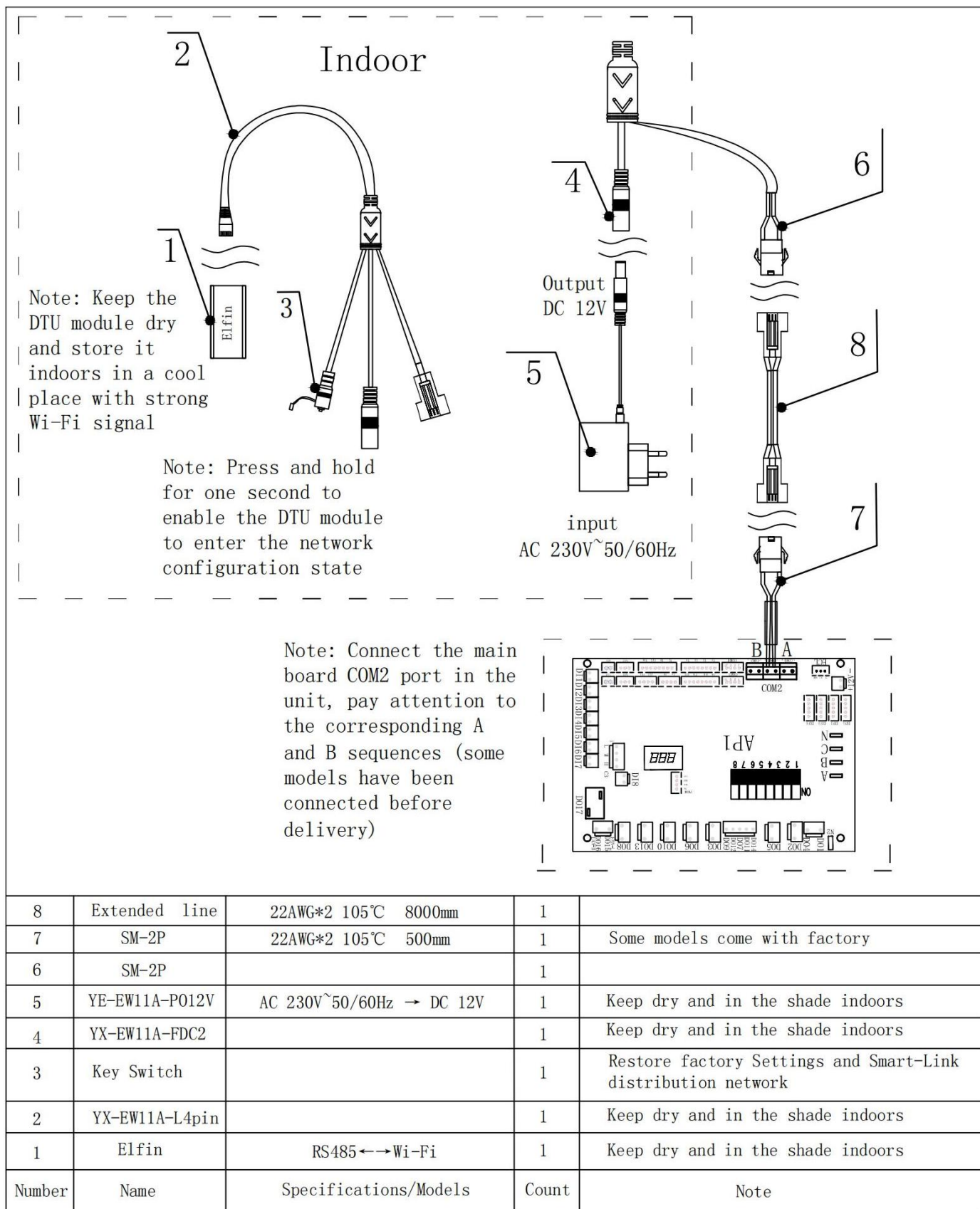
1. Cable Connection Diagram of DTU Module

We will provide two wiring methods, but the specific subject to the actual.



7	SM-2P	22AWG*2 105°C 500mm	1	Some models come with factory
6	SM-2R	22AWG*2 105°C 8000mm	1	
5	YE-EW11A-PO12V	AC 230V~50/60Hz → DC 12V	1	Keep dry and in the shade indoors
4	YX-EW11A-FDC2		1	Keep dry and in the shade indoors
3	Key Switch		1	Restore factory Settings and Smart-Link distribution network
2	YX-EW11A-L4pin		1	Keep dry and in the shade indoors
1	Elfin	RS485←→Wi-Fi	1	Keep dry and in the shade indoors
Number	Name	Specifications/Models	Count	Note

(1)



2. Product Introduction

2.1. Product Name

Smart Heat-Pump APP

2.2. Product Description

The smart heat pump APP can remotely control the heat pump equipment, monitor the operating status, and intelligent alarm anytime and anywhere, providing users with a smart, comfortable and convenient home life experience.

Enable users to "Experience smart technology and enjoy a healthy and comfortable life"!

2.3. Download APP

Google Play application market download QR code:



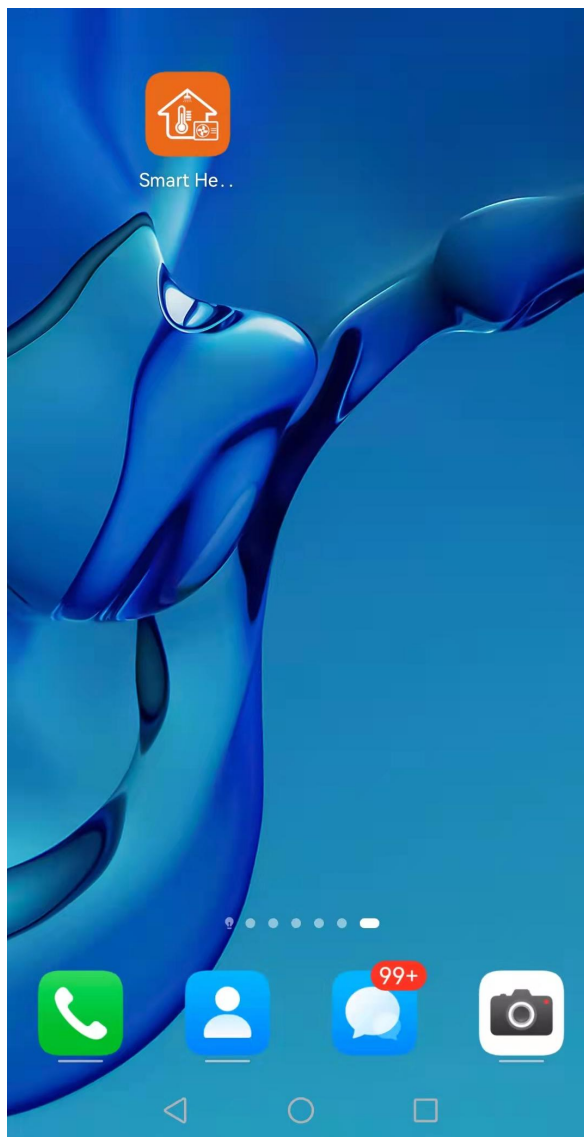
IOS system App Store application market download QR code:



3. APP User Manual

3.1. Start Up

- After the installation is complete, click the “” icon on the desktop to start the software.

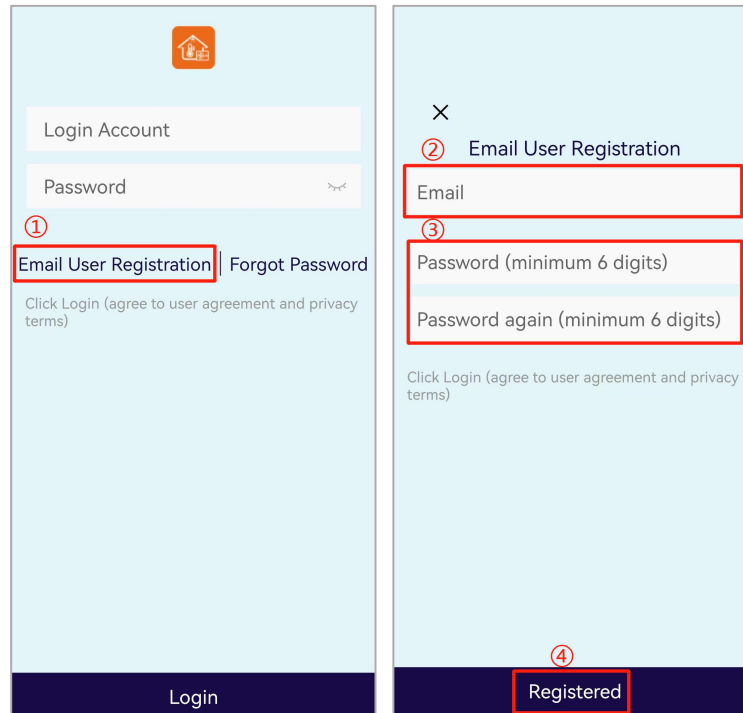


Illustrate

- 1) Click the Smart Heat-Pump icon to start the APP
- 2) Apple phones support operating systems from iOS 9 to iOS 13
- 3) Mainstream brand mobile phones that support the Android operating system

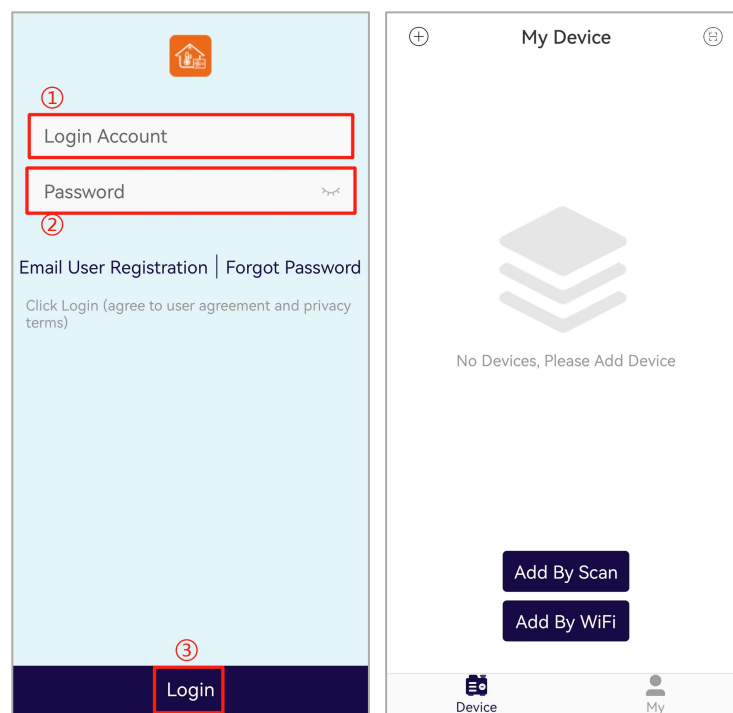
3.2. User Registration

- Users without an account can click the " Email Registration" function on the login page to apply
- ①Click Register → ②Enter email number → ③Set password → ④Click Register → Finish, as shown in the following sequence;



User login

- Existing accounts can be directly logged in, as shown in the following sequence;
- ①Enter account number→ ②Password login → ③Click to log in to enter the APP main interface ;

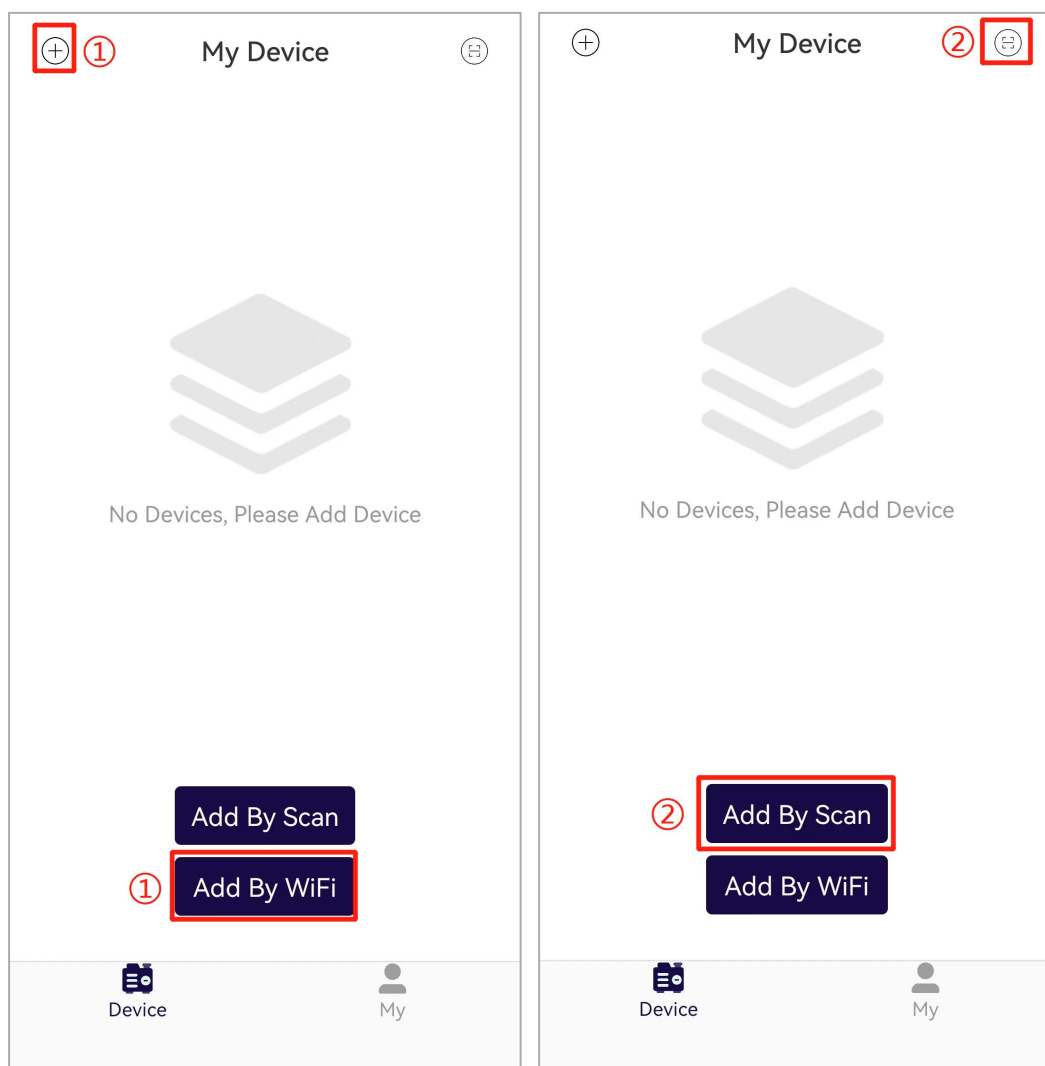


Illustrate

- 1) The first time you use the app, you need to register a new user with your email address, and you can log in only after the registration is successful
- 2) Fill in the registered email account and password to log in to the App
- 3) If you forget your password, you can reset your login password by clicking " Encounter a Problem "
- 4) Click the eye icon on the right side of the password input box to display the clear text password

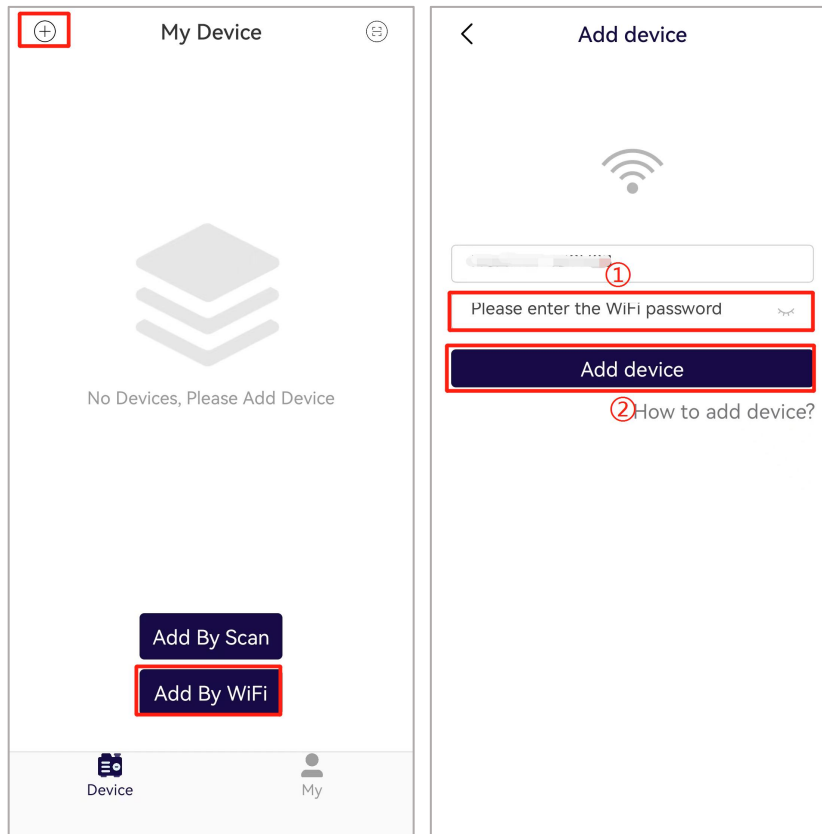
3.3.Adding Device

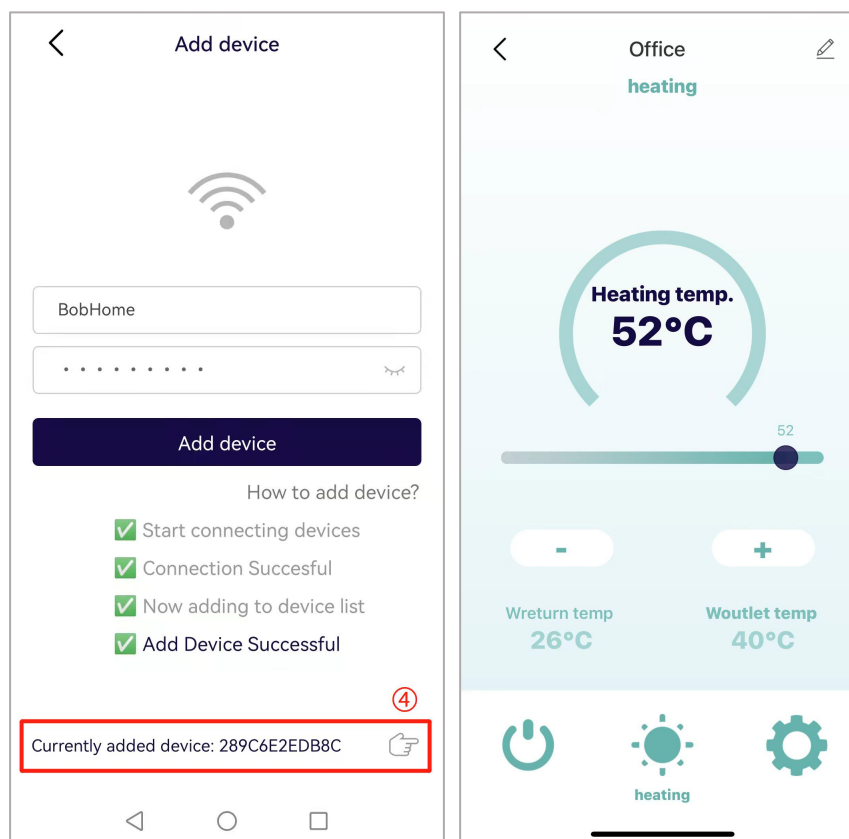
When the user logs in to the App through the registered account for the first time and enters the page shown in the figure below, the smart heat pump device has not been added under the user account at this time, and the device can be added in two ways: ①Add device via LAN ②Scan code to add



3.3.1 LAN Adding Devices

- ① After the mobile phone is connected to Wi-Fi, check the Wi-Fi account and enter the correct Wi-Fi password
- ② Click to add a device, then start searching for devices
- ③ Press and hold the button for 1 second and then let go, the green light of the Elfin box starts to flash quickly, and it enters the distribution network state
- ④ Wait for a few seconds, after the connection is successful, click the bottom of the screen to enter the device control interface



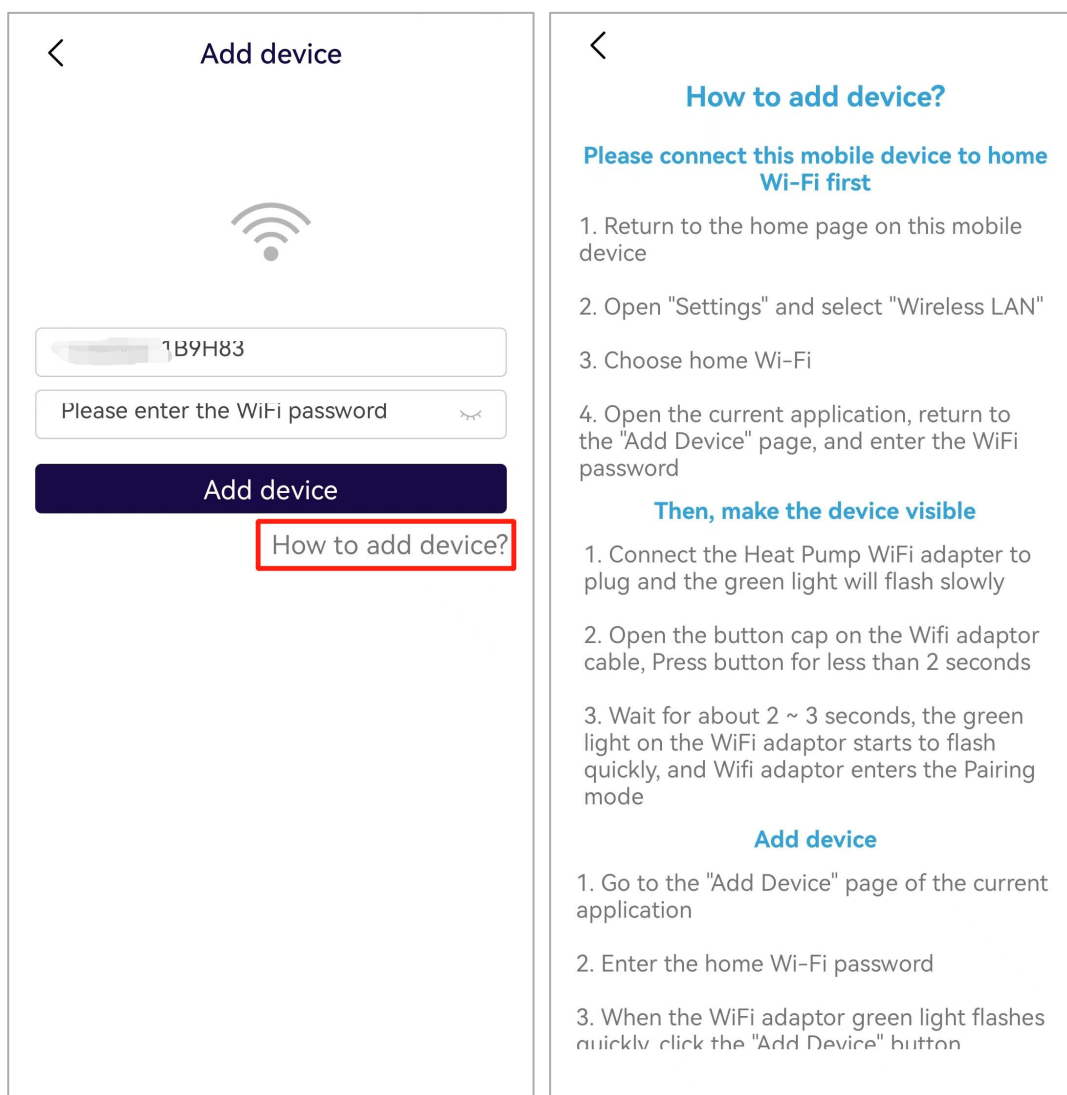


Illustrate

- 1) Click Add LAN on the device list page to enter this page .
- 2) Adding devices to the LAN is to set the EW11A WiFi DTU connected to the heat pump device to the single 2.4GHz WiFi router LAN connected to the mobile phone through this APP .

At this time, it is necessary to ensure that the user's mobile phone is connected to the designated WiFi router network , and the router is in the 2.4G frequency band, and does not support the 5G frequency band and mixed mode.

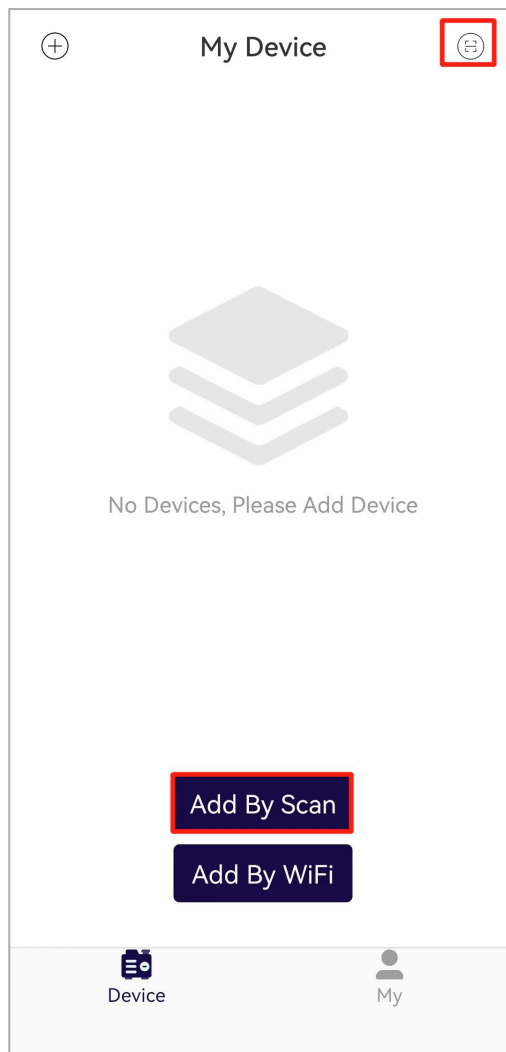
- 3) The app must follow the privacy and security usage specifications of the mobile phone, so before entering this page to add devices, the app will ask the user whether to agree to access the user's location , please click agree, otherwise the LAN addition of the device cannot be completed.
- 4) Please confirm that the WiFi router name on the page is the WiFi name of the local area network that the mobile phone is connected to at this time.
- 5) In the input box under the WiFi name, the user is required to fill in the connection password of this WiFi. The user can click the eye icon to confirm that the password is filled in correctly.
- 6) Before clicking the Add Device button, please confirm that the EW11A WiFi DTU module has entered the distribution network state. Confirm that the connection indicator of the module is flashing quickly, and then click the Add Device button, and the App will start to add the device. Click the question mark icon in the lower right corner of the password input box to see detailed help instructions, as shown below:



7) The process of adding a device includes the connection and addition process of the WiFi module . The connection process means that the WiFi module is connected to the router; the adding process means that the WiFi module is added to the user's device list, and the user can use the device after the addition is successful. The whole process information is as follows:

- Start connecting the device
- device connection success or failure
- Start adding devices
- Device added successfully or failed

3.3.2 Scan Code to Add Device

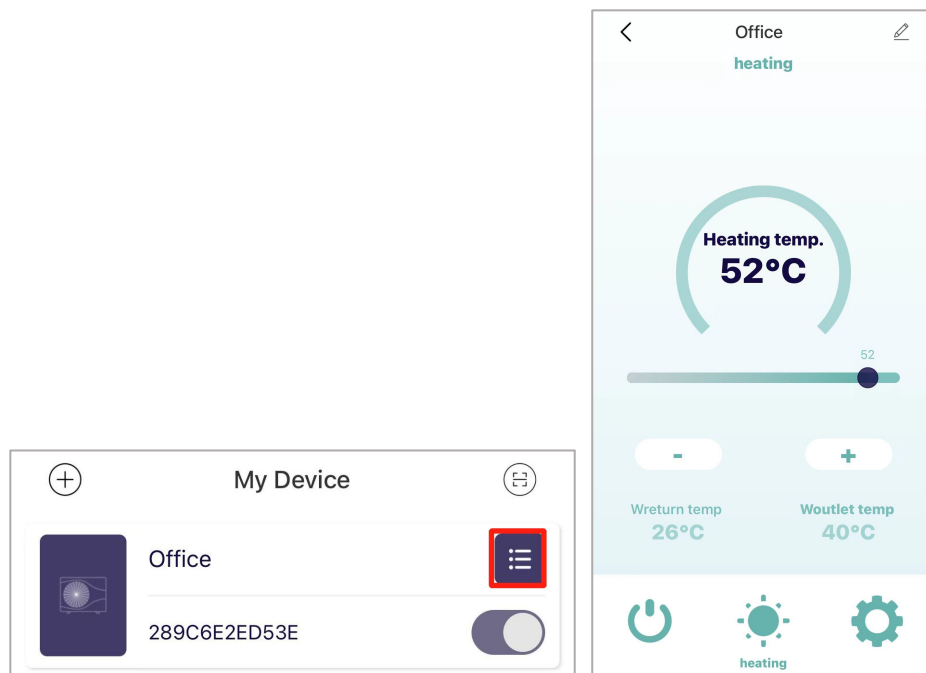


- 1) On the device list page , click the scan code to add (the button on the right of the picture above), and you can scan the code to add the device.
- 2) this scan box with the QR code of the shared device to complete the scan code to add the device.
- 3) The successfully added device will appear in the user's device list.

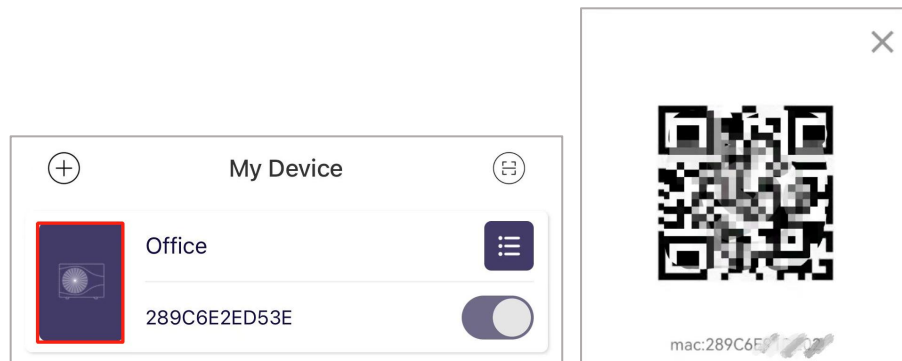
3.4. Equipment List



Click the icon in the upper right corner in the figure below to enter the control page of the device.



Click the left icon in the above figure to display the sharing QR code of the device, which is used to share the device with other user members in the family to bind the device.



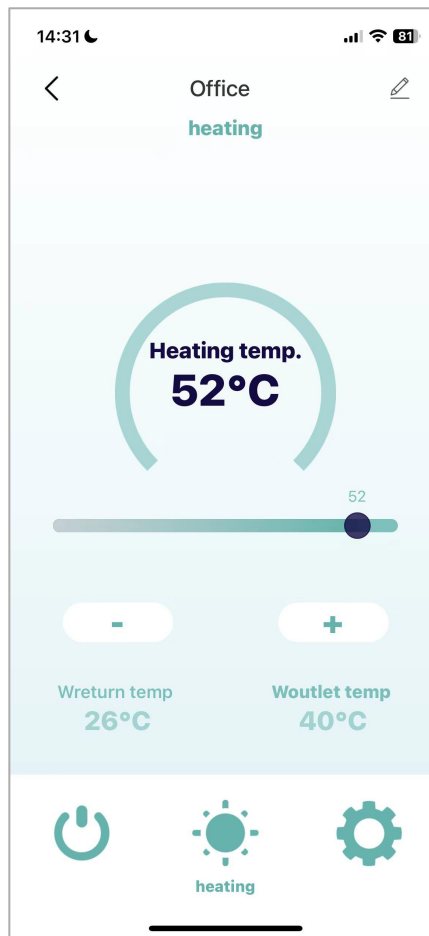
User can disassociate from the device. When sliding to the left in the device list, a delete button will appear on the right side of the device row. Click Delete to disassociate the user from the device, as shown in the figure below:



Illustrate

- 1) After logging in, the user enters the device list page
- 2) In the upper left corner of the page is the Add New Device button , which is used to add devices to the WiFi module distribution network ; the upper right corner of the page is the scan code button, you can actually add devices by scanning the device to share the QR code.
- 3) Device list displays the devices associated with this user , displays the online and offline status of the device, and the device row turns gray when the device is offline.
- 4) The switch icon to the right of each device row indicates whether the device is currently powered on

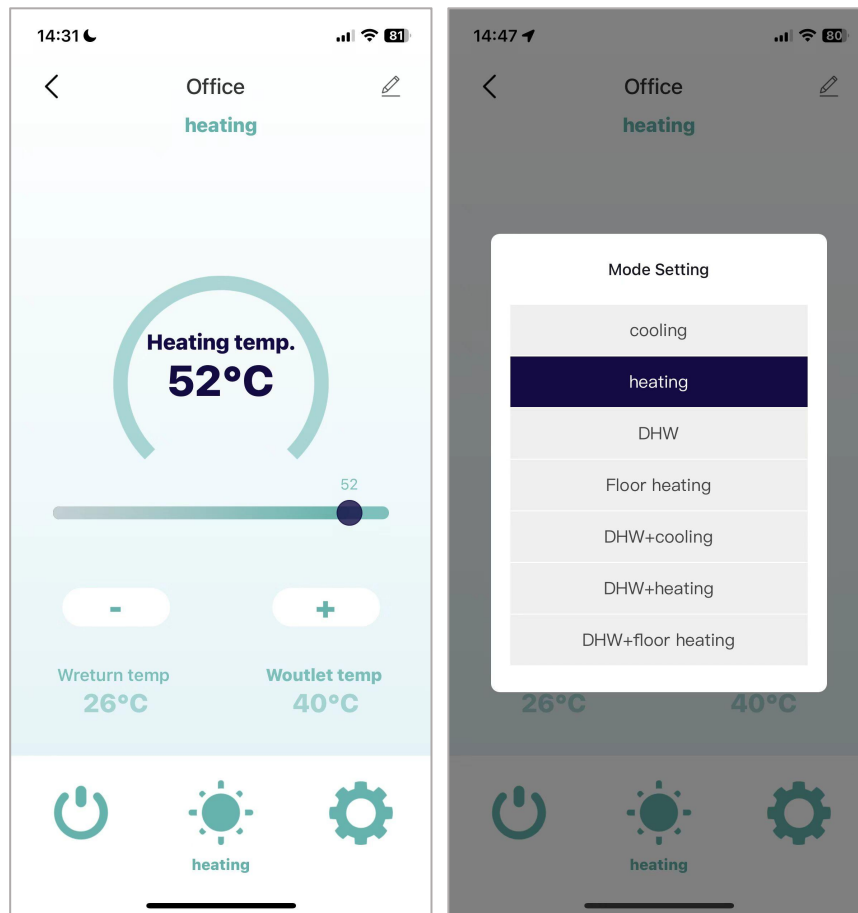
3.5. control page



- 1) Click on a device in the device list to enter the control page of this device
- 2) The upper right corner is used for the user to customize its name in the App for the device.
- 3) The temperature setting values under different working modes are displayed on the main interface.

set the desired setting value by clicking , or the slider

- 4) The page also displays two items of return water temperature, outlet water temperature or water tank temperature according to different working modes.
- 5) The bottom three buttons, from left to right are: device switch , working mode, setting parameters.
 - a. Click the device to switch on and off, and then you can check the working status and control operation of the device after turning it on.
 - b. Click the working mode to see the mode selection menu, and you can modify the working mode of the device.

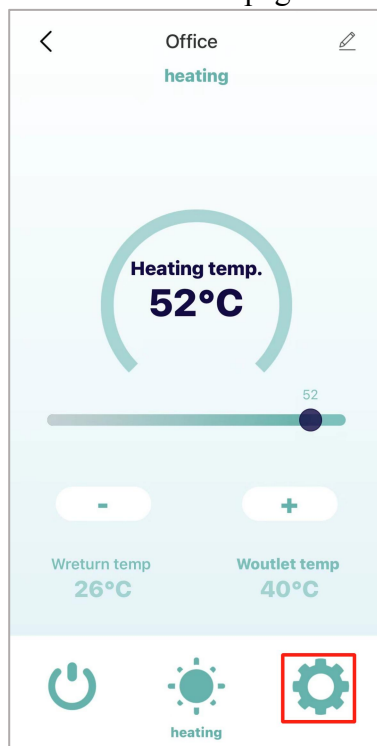


- c. Click the parameter setting button to view and set the detailed parameter information of the device.
- 6) When an alarm occurs on the device, a yellow triangle icon will be displayed on the page, and the content of the alarm information will be displayed. Click this alarm icon to jump to the detailed parameter page .

3.6. parameter information

Description :

- 1) Click the parameter setting on the main control page of the device to enter this page.

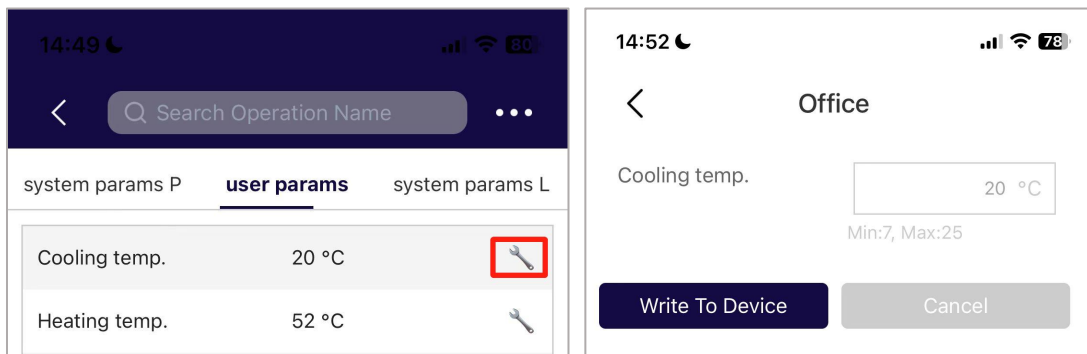


- 2) Device parameters are divided into the following label categories :
Unit real-time status , real-time data , unit system parameters P , user parameters, unit system parameters L , version information

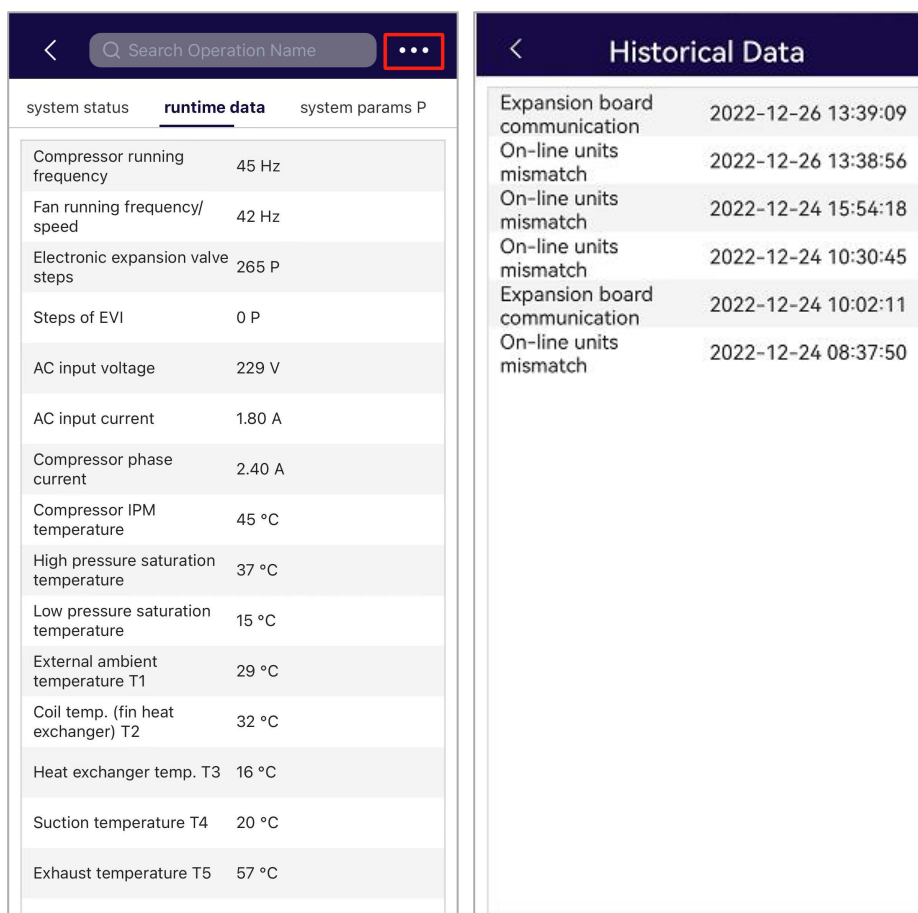
Search Operation Name	
system status	runtime data
Compressor running frequency	45 Hz
Fan running frequency/speed	42 Hz
Electronic expansion valve steps	265 P
Steps of EVI	0 P
AC input voltage	229 V
AC input current	1.80 A
Compressor phase current	2.40 A
Compressor IPM temperature	45 °C
High pressure saturation temperature	37 °C
Low pressure saturation temperature	15 °C
External ambient temperature T1	29 °C
Coil temp. (fin heat exchanger) T2	32 °C
Heat exchanger temp. T3	16 °C
Suction temperature T4	20 °C
Exhaust temperature T5	57 °C

3) Users can view the values of different parameters

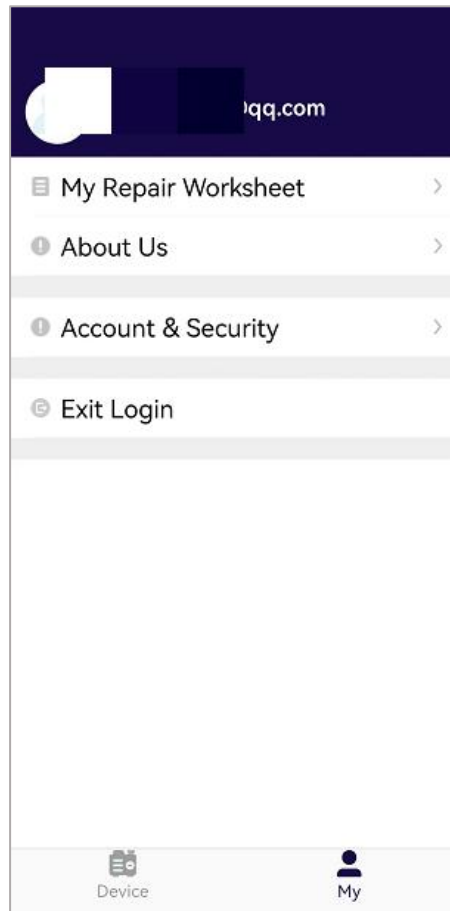
For parameters that can be modified, click the setting icon on the right side of the corresponding row to modify its setting value, as shown in the figure below:



4) Click the ... icon in the upper right corner to view the historical alarm data of this device :



3.7. My Page



Illustrate

- 1) “My” in the bottom navigation bar to enter this page.
- 2) You can view the version number of the App in the About Us menu.
- 3) In the Accounts and Security menu item:
 - a) Can modify the login password of this account
 - b) The account can be canceled in the account cancellation function. After this logout function is executed, the account information and associated device data will be deleted in the system. If you still want to continue to use this App, you need to register a new account again.

Please use this function with caution!
- 4) Click the logout menu item to log out the currently logged in user in this App .